

2

Information

3

Features

4

Specimen

16

Character Set

18

Language Support

1 Style

Zaft

About Zaft

In 2019, the Stedelijk Museum in Amsterdam hosted ‘Mr. Gridnik’, a retrospective celebrating the life and work of Wim Crouwel – a pioneer of Dutch graphic design. The exhibition’s title referenced the nickname he garnered for his analytical, grid-obsessed approach. For Crouwel, the grid wasn’t just another design tool; it was a modernist proclamation, a system to revolutionise communication, as fundamental a tool as a chisel is to a carpenter.

I made the pilgrimage up to Amsterdam and was awestruck to see his work in the flesh. Of particular interest to me was his series of typographic posters he designed for the Stedelijk Van Abbemuseum. Of these, I was drawn to the exhibition poster for ‘Beelden in het heden’ (1959), which displayed a punchy slab-serif lettering – a rarity in Crouwel’s work and perhaps why it piqued my curiosity. Inspired by the poster and exhibition, I quickly got to work, sketching some ideas upon my own grid. The project rapidly snowballed, all still adhering to the grid, but with a slightly more playful character evolving out of this rigid system. And with that, the foundations of Zaft were laid.

Zaft is a weighty display font, full of eccentricity and impact. While rigid in design, there is a playful rhythm and harmony to the negative space, allowing for delicate pockets of air to exist between the heftily compact forms. This is further accentuated by Zaft’s hairline letter-spacing. A unique feature worth noting is Zaft’s use of contextual ligatures, which form rounded connections between particular glyph pairings. These gentle bridges add a touch of elegance to this otherwise heavy-duty design.

Set your super-families aside and make way for Zaft – unapologetically single-styled. A true modernist at heart. Long live the grid!



‘Beelden in het heden’ (Sculpture in the Present) exhibition poster, 1959. Designed by Wim Crouwel. This was the poster that inspired the foundations of Zaft.

OpenType Features	Ligatures Localised Forms	liga locl
Language Support	243 Languages	p 18
Design	Jacob Wise	
First Release	2019	
Last Update	February 2025	
Version	1.1	
Copyright	WiseType® © 2019. All rights reserved. WiseType® is a registered trademark. This document may be used for evaluation purposes only.	

- 2 Information
- 3 Features
- 4 Specimen
- 16 Character Set
- 18 Language Support

OpenType Features

In the majority of design software, you can enable OpenType features to max out your typographic experience!

These can usually be accessed in the Character/OpenType/Type options in most programmes. For websites, you can use the `font-feature-settings` CSS property to enable a specific feature. You can enable a feature by referencing its unique four-letter tag e.g., `ss01`, `ornm`, `liga`, `dlig`.

For instance, if you'd like to enable 'Ligatures', you could write: `font-feature-settings: "liga";`

Features

Ligatures liga

Creates small rounded connections between particular glyph pairings.

Localised Forms locl

Localised forms adjust characters to match the typographic conventions of different languages or regions. The following localisations are supported: Moldovan [MOL], Romanian [ROM].

Off



On



2	Information
3	Features
4	Specimen
16	Character Set
18	Language Support

P120Grit

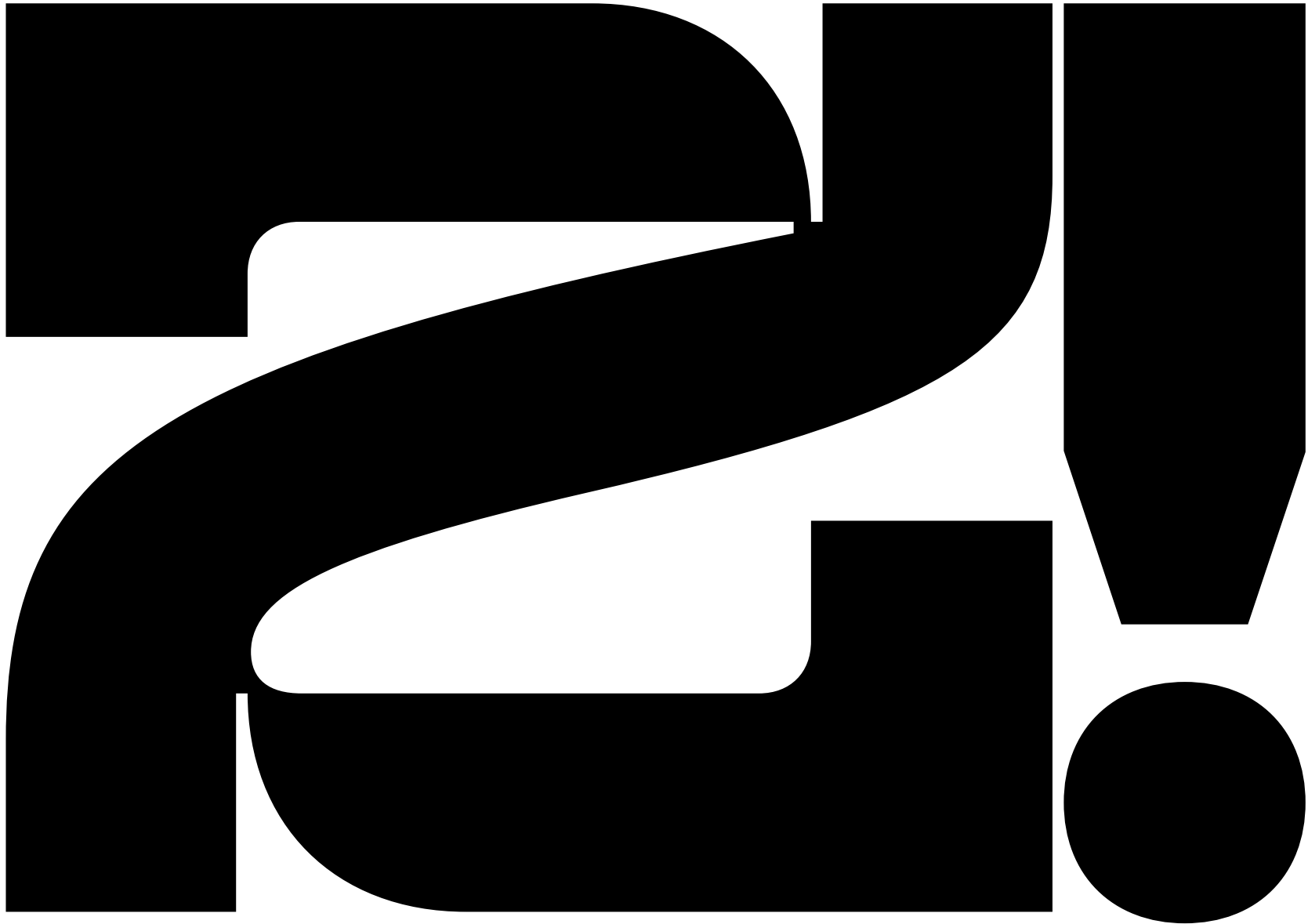
550 pt



2	Information
3	Features
4	Specimen
16	Character Set
18	Language Support

P120Grit

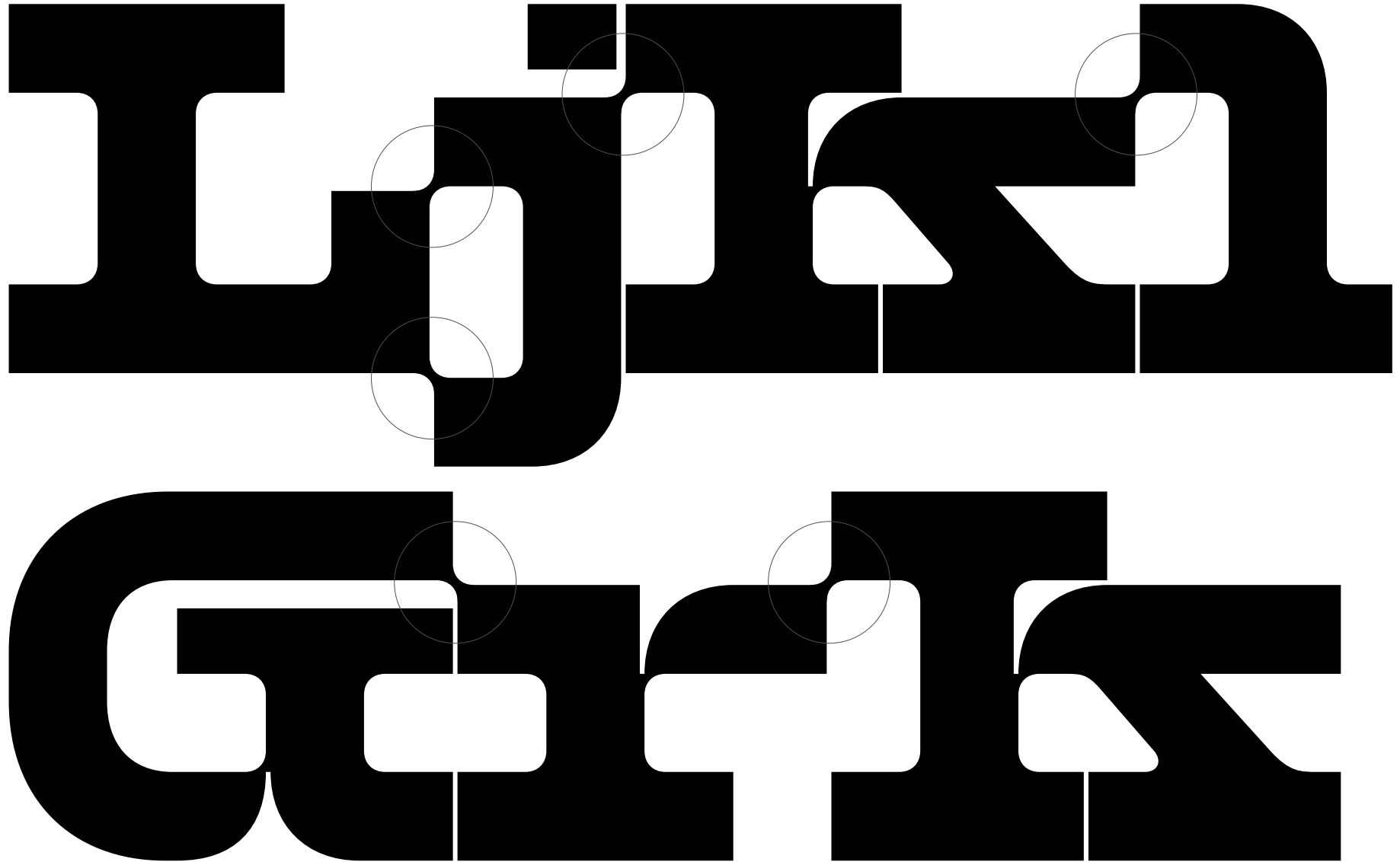
550 pt



2	Information
3	Features
4	Specimen
16	Character Set
18	Language Support

P120Grit

350 pt



2	Information
3	Features
4	Specimen
16	Character Set
18	Language Support

P120Grit

190 pt

42.37

P120Grit

190 pt

Meat

2	Information
3	Features
4	Specimen
16	Character Set
18	Language Support

P120Grit

190 pt

B&O

P120Grit

190 pt

ZAZB

2	Information
3	Features
4	Specimen
16	Character Set
18	Language Support

P120Grit

190 pt

(B6%)

P120Grit

190 pt

Seeg'at

Acid Test
Kentucky

The Birds
Vertigo

FANTASY*
'2-AXLES'TM

Blop/Blop
Öözeen

2	Information
3	Features
4	Specimen
16	Character Set
18	Language Support

P120Grit

90 | 100 pt

Vytířčojů
Nxxëñëssit

Ligatures

P120Grit

90 | 100 pt

Ticörigē
gröfoöle

Ligatures

ZomJoifiction
Bachelorette
Vocctionists

Abolitionizing
Quintillion
Nannofossils

**Dijlziigt (Wijl)
Kroedingen 3061
Eucromest!**

Ligatures

**ROTTTERIDAM:
Boijnmouss von
Betwiningen**

Ligatures

**Blasphemous
MODERNIST
Percival Bell™**

**Computation
Rocket Power
[IBM] Research**

2	Information
3	Features
4	Specimen
16	Character Set
18	Language Support

Uppercase

A B C D E F G H I J K L M N O P Q R S T U V W X Y Z

Uppercase

α β c d e f g h i j k l m n o p q r s t u v w x y z

Figures

0 1 2 3 4 5 6 7 8 9

Punctuation

! ? , . ; : ... & § ¶ @ † ‡ 0 [] / { } ¡ ¢ _ • " , " " ' < > . < > * - — —

Currency Symbols

€ £ \$ ¢ ¥ ¢

Currency Symbols

+ − × ÷ = ± < > | ~ / # / %

Prebuilt Fractions

1/4 1/2 3/4

Superscript

H 1 2 3

À Á Â Ã Ä Å Æ Ç È É Ê Ë Ì Í Î Ï Ñ Ò Ó Ô Õ Ö Ø Ù Ú Û Ü Ý Þ ß à á â ã

À Á Â Ã Ä Å Æ Ç È É Ê Ë Ì Í Î Ï Ñ Ò Ó Ô Õ Ö × Ø Ù Ú Û Ü Ý Þ ß à á â ã



2 Information
3 Features
4 Specimen
16 Character Set
18 Language Support

243 Languages

For languages with multiple writing scripts, the Latin version is supported.

Acheron	Eastern Arrernte	Luba-Lulua	Samoan	Wayuu
Achinese	Eastern Oromo	Luo (Kenya and Tanzania)	Sango	West Central Oromo
Afar	English	Luxembourgish	Sangu (Tanzania)	Western Abnaki
Afrikaans	Faroese	Macedo-Romanian	Saramaccan	Western Frisian
Alekano	Fijian	Makonde	Sardinian	Wiradjuri
Aleut	Filipino	Malagasy	Scots	Xhosa
Alonquin	Finnish	Malaysian	Scottish Gaelic	Yanesha'
Amahuaca	French	Maltese	Sena	Yao
Amarakaeri	Friulian	Manx	Seri	Yucateco
Amis	Gagauz	Maore Comorian	Seselwa Creole French	Zulu
Anaang	Galician	Maori	Shawnee	Záparo
Andaandi, Dongolawi	German	Mapudungun	Shipibo-Conibo	
Anuta	Gheg Albanian	Matsés	Shona	
Aragonese	Gilbertese	Mauritian Creole	Sicilian	
Arbëreshë Albanian	Gooniyandi	Meriam Mir	Silesian	
Asháninka	Guadeloupean Creole French	Meru	Slovak	
Ashéninka Perené	Gusii	Minangkabau	Slovenian	
Balinese	Haitian	Mirandese	Soga	
Banjar	Hani	Mohawk	Somali	
Basque	Hiligaynon	Montenegrin	Soninke	
Batak Dairi	Hopi	Munsee	South Ndebele	
Batak Karo	Huastec	Murrinh-Patha	Southern Aymara	
Batak Mandailing	Hungarian	Mwani	Southern Qiangdong Miao	
Batak Simalungun	Icelandic	Mískito	Southern Sami	
Batak Toba	Iloko	Naga Pidgin	Southern Sotho	
Bemba (Zambia)	Indonesian	Ndonga	Spanish	
Bena (Tanzania)	Irish	Neapolitan	Sranan Tongo	
Bikol	Istro Romanian	Ngazidja Comorian	Standard Estonian	
Bislama	Italian	Niuean	Standard Latvian	
Borana-Arsi-Guji Oromo	Ixcatlán Mazatec	Nobiin	Standard Malay	
Bosnian	Jamaican Creole English	Nomatsiguenga	Sundanese	
Breton	Japanese	North Ndebele	Swahili	
Buginese	Javanese	Northern Kurdish	Swedish	
Candoshi-Shapra	K'iche'	Northern Qiangdong Miao	Swiss German	
Caquinte	Kabuverdianu	Northern Uzbek	Tagalog	
Cashibo-Cacataibo	Kalaallisut	Norwegian	Tahitian	
Catalan	Kalenjin	Nyankole	Tedim Chin	
Cebuano	Kamba (Kenya)	Occitan	Tetum	
Central Aymara	Kaonde	Orma	Tetun Dili	
Central Kurdish	Karelian	Oroqen	Tok Pisin	
Chamorro	Kashubian	Palauan	Tokelau	
Chavacano	Kekchí	Pampanga	Tonga (Tonga Islands)	
Chiga	Kenzi, Mattokki	Papiamento	Tosk Albanian	
Chiltepec Chinantec	Khasi	Pedi	Tumbuka	
Chokwe	Kimbundu	Picard	Turkish	
Chuukese	Kinyarwanda	Pichis Ashéninka	Turkmen	
Cimbrian	Kituba (DRC)	Piemontese	Tzeltal	
Cofán	Kongo	Pijin	Tzotzil	
Cook Islands Māori	Konzo	Pintupi-Luritja	Uab Meto	
Cornish	Kven Finnish	Pohnpeian	Upper Guinea Crioulo	
Corsican	Kölsch	Polish	Upper Sorbian	
Creek	Ladin	Portuguese	Venetian	
Crimean Tatar	Ladino	Potawatomi	Veps	
Croatian	Latgalian	Quechua	Võro	
Czech	Lithuanian	Romanian	Walloon	
Danish	Lombard	Romansh	Walser	
Dehu	Low German	Rotokas	Waray (Philippines)	
Dutch	Lower Sorbian	Rundi	Warlpiri	